



**ECO
LIGHT**
INDUSTRIAL LED

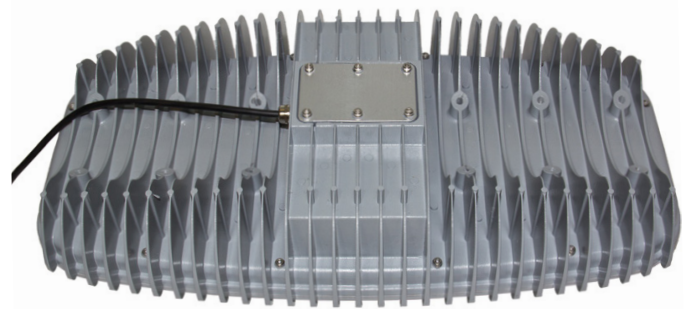
**LED
INDUSTRIAL
FLOOD
LIGHTS**

LEDFL37-400AC

400W LED INDUSTRIAL FLOODLIGHT

This 400 watt LED light is one of the most powerful in the ECOLight range. It has a similar lighting output level to a 1000 watt metal halide. It provides an exceptionally well lit working environment for those working under it.

This unit is perfect for sports fields, car parks, large industrial portable lighting stands, and trucking yards where good lighting is required over a larger scale.



TECHNICAL SPECIFICATIONS

Total Power	400W
LED Power	360W
LED Lumens	36,000lm
Input Voltage	AC (80-315V)
Power Supply Efficiency	>90%
Power Factor	>0.98
LED Lighting Efficiency	100lm/W
Colour Rendering Index	Ra>80
Colour Temperature	6000K
Ambient Temperature	-40°c to 60°c
IP Rating	IP65
Lifespan	>50,000 hours
Eco-friendly	No UV, IR, Lead or Mercury
Materials	Aluminium, toughened glass
Weight	13kg
Dimensions	680x380x190mm

20 Neilpark Drive
East Tamaki
Auckland.
NEW ZEALAND
phone: 64 9 272 5619

 **ECO
LIGHT**
www.ecolight.co.nz