



**ECO**  
**LIGHT**  
INDUSTRIAL LED

**LED**  
**INDUSTRIAL**  
**BATTEN**  
**LIGHTS**

**LEDUV600-31CW • LEDUV1200-62CW**

## LED INDUSTRIAL BATTEN LIGHTS

This LED luminaire is designed specifically to replace traditional fluorescent fixtures for carparking, walkways and under verandah areas.

The benefit of this model is that it has an onboard daylight sensor and a microwave sensor for motion detection. In addition this model also has the ability to run at dim state until motion is detected, optimising lighting & power output to a need only requirement. The LEDUV range can also operate on a timer function so that lighting is always constant during peak hours and then reduces to sensor mode during hours of low use.

This luminaire is also capable of working in conjunction with a row of lights (master & slave) so that only the sensors at both ends of a carpark/ walkway area function.



### TECHNICAL SPECIFICATIONS

Fixture/Part No.	LEDUV600-31CW	LEDUV1200-62CW*
Total Power	31W	62W
LED Lumens	2700	5400
Fixture Lumens	2300	4600
LED Lighting Efficiency	74lm	74lm/W
Colour Temperature	(WW) 3700-4200K, (CW) 5700-6500K	(WW) 3700-4200K, (CW) 5700-6500K
Colour Rendering(Ra)	>80	>80
IP Rating	IP65	IP65
Life Span	40,000 hours**	40,000 hours**
Operation Temperature	-20°C to 50°C	-20°C to 50°C
Construction	Aluminium Housing	Aluminium Housing
Weight	2.79KGS	5.24KGS
Beam Angle	120°	120°
Suggested Working height	Max. 12M	Max. 12M
Size	690x141x73mm	1253x141x73mm
Dimmable	Yes	Yes
Power factor	>0.9	>0.9
Input Voltage Range	220-240V	220-240V

\*LEDUV1200-62CWBATT & LEDUV600-31CWBATT are not suitable to be used as emergency lights and are only intended as a battery backup light upon failure of the mains supply.

\*\*Under 40°C

Note: Warm White colour available on special order only

Note: Backup battery is standard in models with suffix BATT only



### IDEAL FOR:

- Parking Buildings
- Warehousing
- Office Buildings
- Schools
- Retail
- Anywhere that twin fluorescent fittings are installed

SDOC is available on our website

CAT NO.	Back Up Battery	Fixture Lumens	Power	Supply Voltage
LEDUV600-31CW	NO	2300	31W	220-240V AC
LEDUV1200-62CW	NO	4600	62W	220-240V AC
LEDUV600-31CWBATT	YES	2300	31W	220-240V AC
LEDUV1200-62CWBATT*	YES	4600	62W	220-240V AC

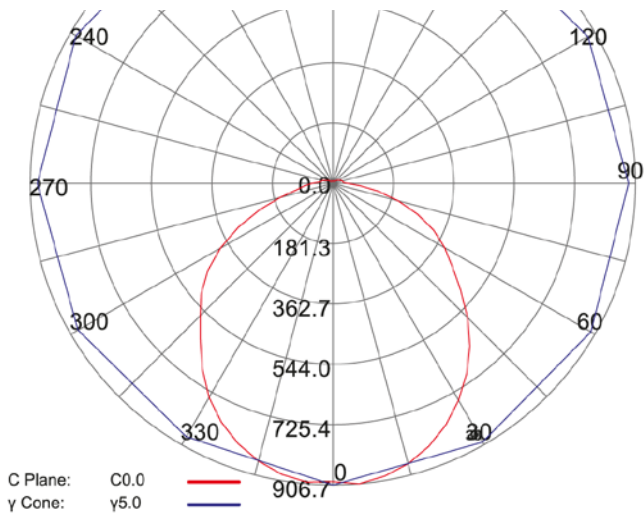


[www.ecolight.co.nz](http://www.ecolight.co.nz)

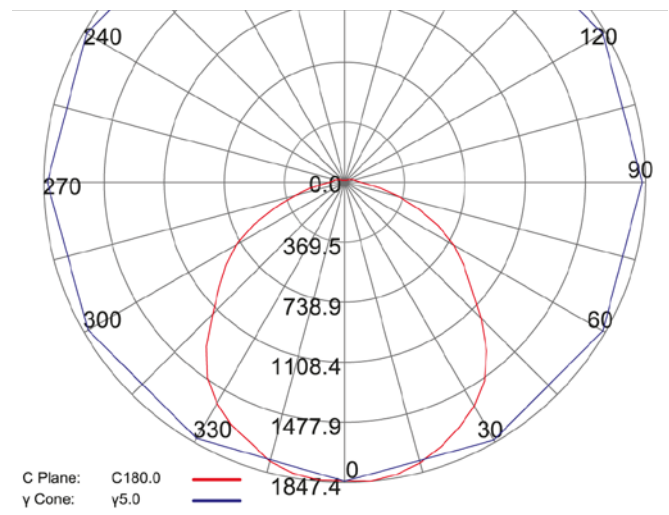
## DIMENSIONS



## PHOTOMETRICS

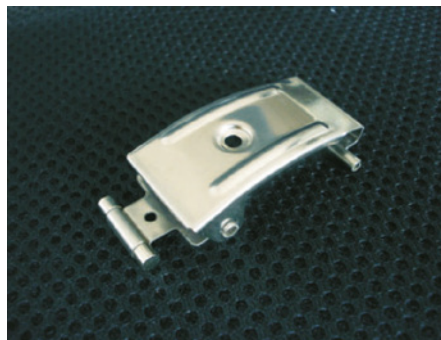


**LEDU600-31W**



**LEDU1200-62W**

## MOUNTING HARDWARE (Included)

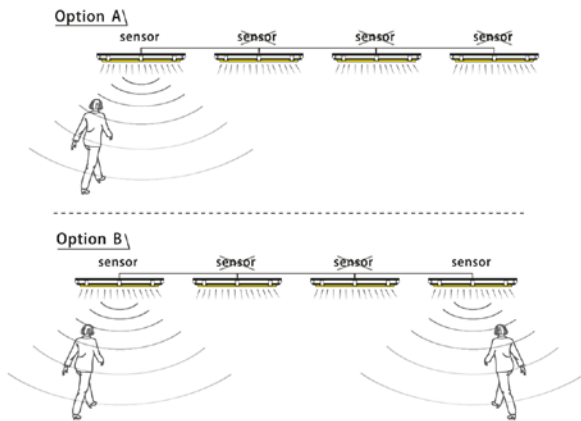


### MOUNTING CLIP QUANTITIES INCLUDED

- LEDUV600-31CW = 6 clips
- LEDUV1200-62CW = 10 clips

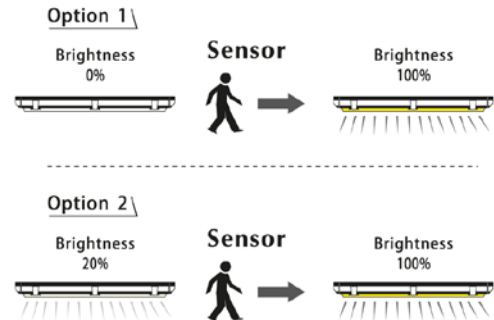
## SENSOR OPTIONS

### Master/Slave Function



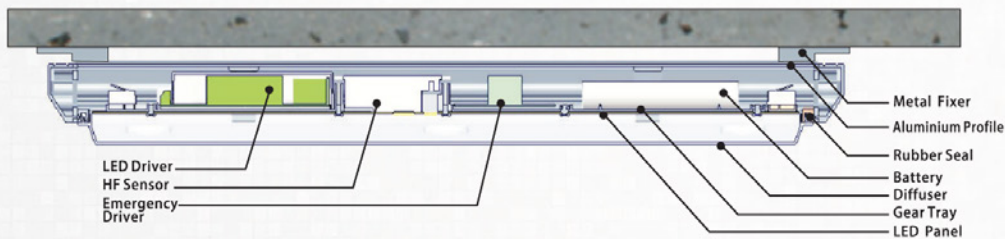
### Hi-low Light Function

Option 1: Normal sensor light  
Option 2: Hi-low light operated by sensor

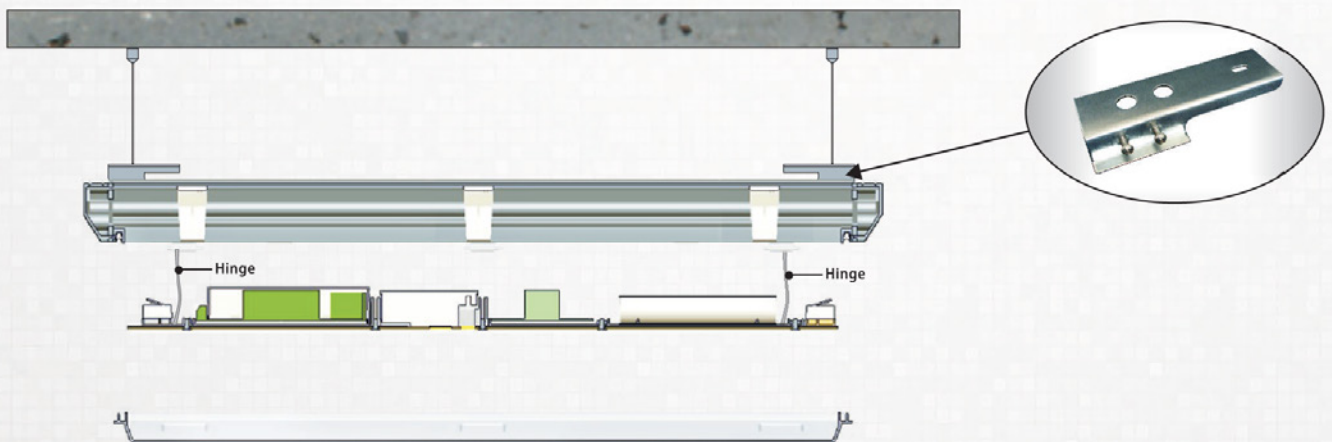


## MOUNTING OPTIONS

### Surface Mounting



### Pendant Mounting



78 Cryers Road  
East Tamaki  
Auckland.  
NEW ZEALAND  
phone: 64 9 272 5619