

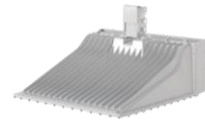
LED Flood Lighting MAHA-Plus Series

GigaTera®
beyond light

MAH1K6

Product Description

- Outstanding asymmetric reflector optics, full cut-off, glare-free, minimum light pollution
- No need of visor, worry-free in visor corrosion or cleaning, less wind & structural load
- High efficacy, maximum energy saving, excellent cooling technology and durability
- 20kV built-in surge protector, solid design appearance, corrosion-free powder painting
- Flexible options with remote or integrated driver (wireless or DMX, NEMA 7, DALI, Cloud control)
- Support moving light function and future upgrade with GigaTera's RAS solution (Remote Auto Steering)



[MAH1K6 Fixed type]



[MAH1K6 With RAS]

Application

- Sporting Facilities
- Airplane Hangars
- Airport Aprons
- Parking Lots
- Harbor / Yard
- Moving light applications with RAS function

Certification

- CE

Technical specifications

Model name	MAH1K6 (optional as MAH1K4)	
Power consumption	Max. 1600W (1400W optional as MAH1K4)	
CCT (color temperature)	5000K (5700K / 4000K / 3000K optional)	
Luminous flux *	208,000 lm	
Luminous efficacy *	Up to 130 lm/W	
CRI (color rendering)	> 70 Ra (80Ra optional)	
LED driving current	700 mA	
Licht distribution	Asymmetrically wide, horizontal 90° or 65°	
BUG Values	B4 – U0 – G5	
Driver Type	External / Integrated on the mast	
Input voltage	200 ~ 240Vac(EU and other countries), 200 ~ 277Vac(North America only) 347 ~ 480Vac (Optional upon request)	
Input	Max. 10.0A (@200Vac) Max. 5.8A (@347Vac)	
Power factor	≥0.9 at max. load	
Frequency	50 / 60 Hz	
Surge protection	Line – Line 20kV, Line – FG 20kV	
Driver Type	Constant current	
Manufacturer	GigaTera Lighting Inc. / Made in Korea	
Size	External Driver	697 x 619 x 250 (mm)
	Driver	593.0 x 180.0 x 145.0 (mm) with Zigbee 623.0 x 180.0 x 145.0 (mm) non-option or wired control
Weight	LED Module	22.5 Kg
	With Driver	38.0 Kg
Material	Case	Aluminum
	Optics	AL Coating Reflector
	Cover	Tempered glass 4.0T (clear)
Wind projected area	Front (m ²): 0.15, Side (m ²): 0.095 (LED module only) / Front (m ²): 0.24, Side (m ²): 0.1 (with Driver).	
IP protection class	IP 66	
IK degree of protection	IK 08	
Operating temperature	-30°C ~ 55°C	
Option	Control	Wireless (ZigBee) / Wired (RS-485, DMX-512, DALI) / NEMA-7
	Bracket	Swivel bracket, mast mount
Operating lifetime	> 80,000 hours (L80B10) at Ta 25°C , > 60,000 hours (L80B10) at Ta 40°C	
Finish	Powder coating (Gray, RAL 7038)	

* Tolerance : ± 5%



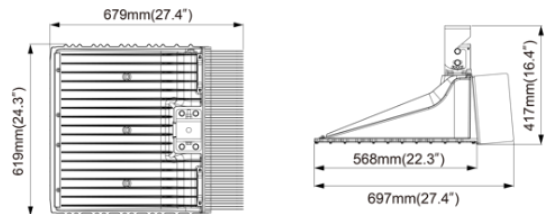
Copyright © 2022 GigaTera Lighting Inc. All rights reserved / www.gigaterallighting.com
The information in this document is subject to change without notice / Document Revision V0 / 2022.08.25
GigaTera Lighting Inc. Address: 3, Dongtansandan 6-Gil, Hwaseong-si, Gyeonggi-do, South Korea
Phone: +82.31.370.8800 / E-Mail: ledsales@gigateraled.com

LED Flood Lighting MAHA-Plus Series

GigaTera[®]
beyond light

MAH1K6

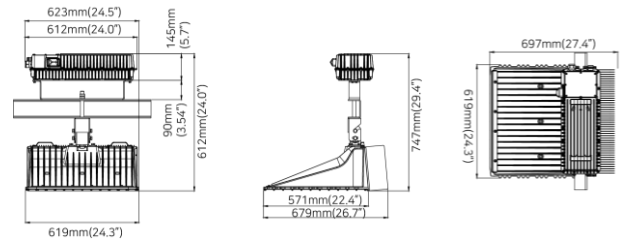
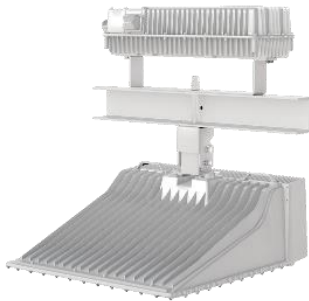
Dimension



Size

697mm x 619mm x 250mm (without install bracket),
697mm x 619mm x 417mm (with install bracket)

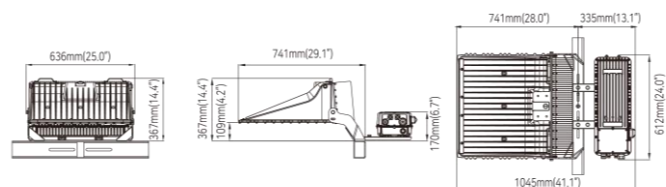
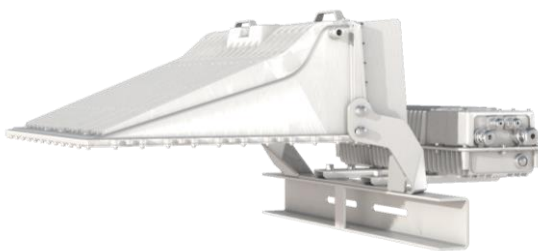
Dimension – Top mounted driver



Size

697.0 x 619.0 x 747.0 (mm)
27.4 x 24.3 x 29.4 (inch)

Dimension – Rear mounted driver



Size

612 x 1045 x 367 (mm)
24.0 x 41.1 x 14.4 (inch)



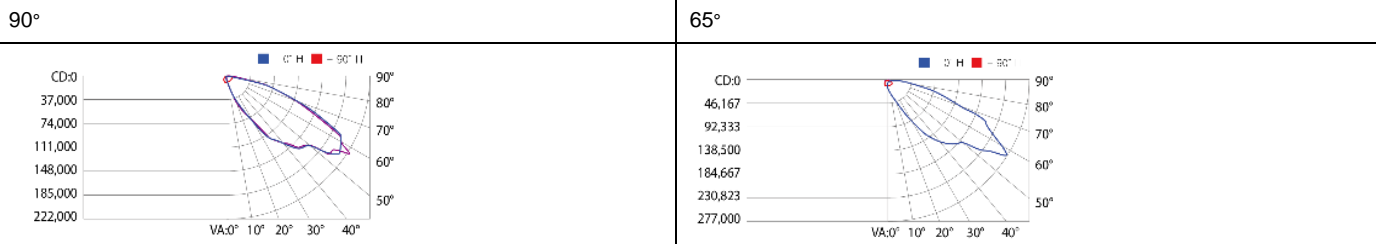
LED Flood Lighting MAHA-Plus Series

MAH1K6

Dimension - Driver for MAH1K6

Driver (Zigbee Node Type)		Driver (Wired control option)	
Size	623.0 x 239.0 x 145.0 (mm) 23.3 x 9.4 x 5.7 (inch)	Size	623.0 x 214.0 x 145.0 (mm) 23.3 x 8.4 x 5.7 (inch)
Weight	15.5 kg / 34.1 lb	Weight	15.5 kg / 34.1 lb

Photometry Data



Control System (Optional)

Wireless Control	ZigBee
Input Voltage	12 Vdc
Max. Power Consumption	0.3W (@15 Vdc)
Standard	2.4 GHz – IEEE 802.15.4 (Compatible), Operating frequency 2400MHz ~ 2483MHz
Network	Mesh
RF Tx Power	Max. +8 dBm (Typ. 5 dBm)
Data Rate	250 kbps
Security	28 bit AES Encryption Algorithms
Antenna	Omni Type, 2 dBi

Wired Control	RS-485	DMX-512	DALI
Input Voltage	12 Vdc		
Max. Power Consumption	0.2W (@12 Vdc)		
Communication Method	RS-485	DMX-512	Dali Type 1
Data Rate	115,200 bps, 8-N-1	250,000 bps, 8-N-2	1,200bps

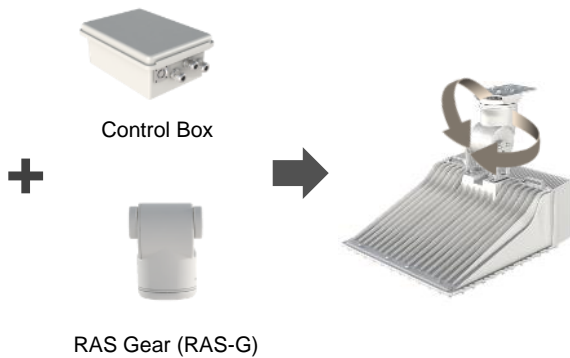
LED Flood Lighting MAHA-Plus Series

MAH1K6

Ordering Information (MAHA-PLUS Series)				Ordering Code Usage : MAH1K6-X500907G1			
MAH	000	-	0	00	000	0	0
	Power Consumption		Input Voltage	CCT (K)	Beam Angle	CRI	Fixture color
	1K6 = 1600W 1K4 = 1400W (Optional)		V = DC 100V X = DC 200V (Through BLU)	50 = 5000K 40 = 4000K 30 = 3000K	090 = 90° 065 = 65°	7 = 70Ra 8 = 80Ra 9 = 90Ra	G1=Gray powder

Ordering Information (Driver)			Ordering Code Usage : BLU1K6-HXW		
BLU	000	-	0	0	0
	Power Consumption		Input Voltage	Output Voltage	Control System
	1K6 = 6200W 1K4 = 1400W (Optional)		K = AC200 ~ 240V H = AC200 ~ 277V C = AC347 ~ 480V	X = DC 200V	W = Wired(RS-485) M = Wired(DMX-512) Z = Wireless(Zigbee) N = NEMA-7

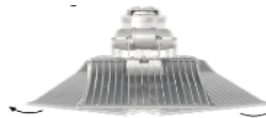
Moving light option – MAH1K6 with RAS (Remote Auto Steering)



- Wired / Cloud Control



Adjustable rotating
(max. ±80degree)



- Preset On-site Wireless Control

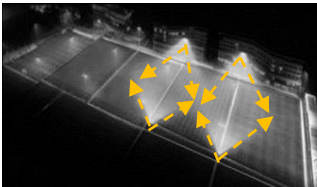


Adjustable tilting
(max. ±20degree)



Application – MAH1K6 with RAS

- Light and mast sharing to reduce number of lights, investment, energy consumption, structure load
- Support to improve illuminance without additional lights and flexible multi-purpose light scenes
- Future-proof upgrade to add RAS function after installing fixed type MAH1K6



[Sports field, racetrack, stadium, airport, harbor/rail terminal, industrial large area, parks]